

SACRAMENTO AVENUE STREETScape

DETAILED STREETScape SITE PLAN



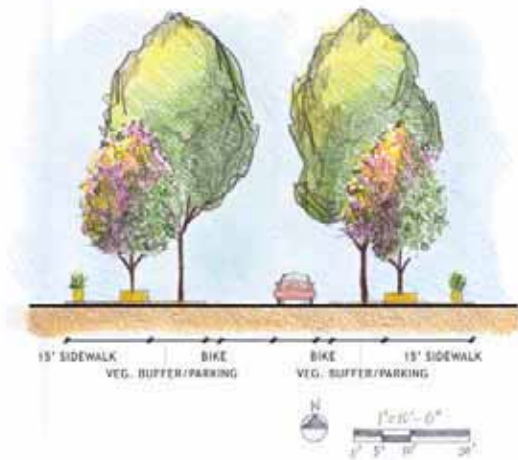
STREETScape SECTION-ELEVATION



STREETScape DESIGN

With a goal of uniting the community and creating an identity rich in history and culture, the design of Sacramento Streetscape will allow the street to become a local center for both residents and visitors. The design includes amenities such as a widened sidewalk with plenty of lighting and planter benches, a clearly-labeled bicycle lane, and a vegetative strip of native California plants acting as part parallel parking and a buffer for pedestrian protection.

STREET CROSS-SECTION-ELEVATION



STREETScape PERSPECTIVE



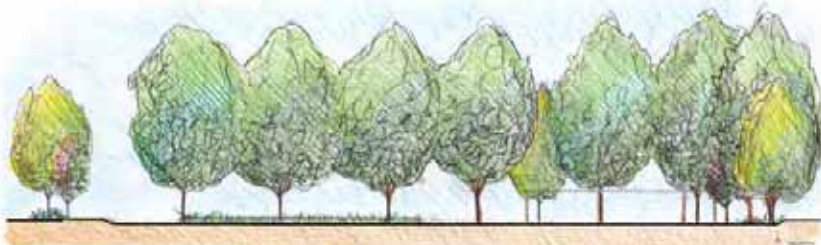
LOCATION



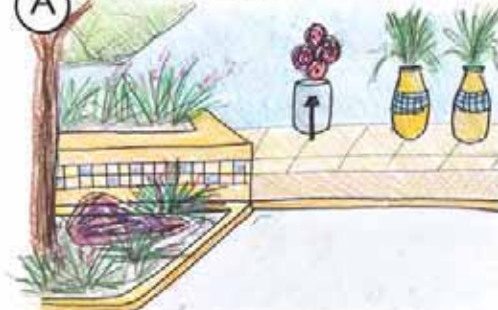
Sacramento Avenue between Douglas Drive and the I-Street Bridge

SACRAMENTO AVENUE STREETSCAPE

GATHERING AREA SECTION PLAN



(A) ART & CULTURE



Community-made sculptures, mosaics, and tiles can be placed on planter benches, the paved concrete sidewalk, and the large planter-pots.

(B) GATHERING AREA



A multi-purpose stage, large shaded trees, and benches help promote social aspects of connection in the gathering area.

MULTIPURPOSE GATHERING AREA



The multipurpose green space provides connection for diverse residents of the community. Amenities include large shade-canopy valley oak trees, no-mow fescue, seating areas, and a pavilion.

(C) WELCOME TO WEST SACRAMENTO



A distinct sign adds cultural identity and welcomes both residents and visitors into the city of West Sacramento.

The gathering space will provide a central spot for celebrating culture, art, and traditions and bringing in a community identity.

(C)

